



HORIZONTAL TOWER

# Fiera Milano Executive Office

**swiss  
pearl**®

HORIZONTAL TOWER

# Fiera Milano Executive Office

Nr. 180530

## PRODUCT

Swisspearl Reflex Gold 9272

## ARCHITECT

5+1AA Genoa, Italy  
Jean-Baptiste Pietri Architectes, Paris, France

## CLIENT

Sviluppo Sistema Fiera spa, Milan, Italy

## FAÇADE CONTRACTOR

Italiana Costruzioni spa, Milan

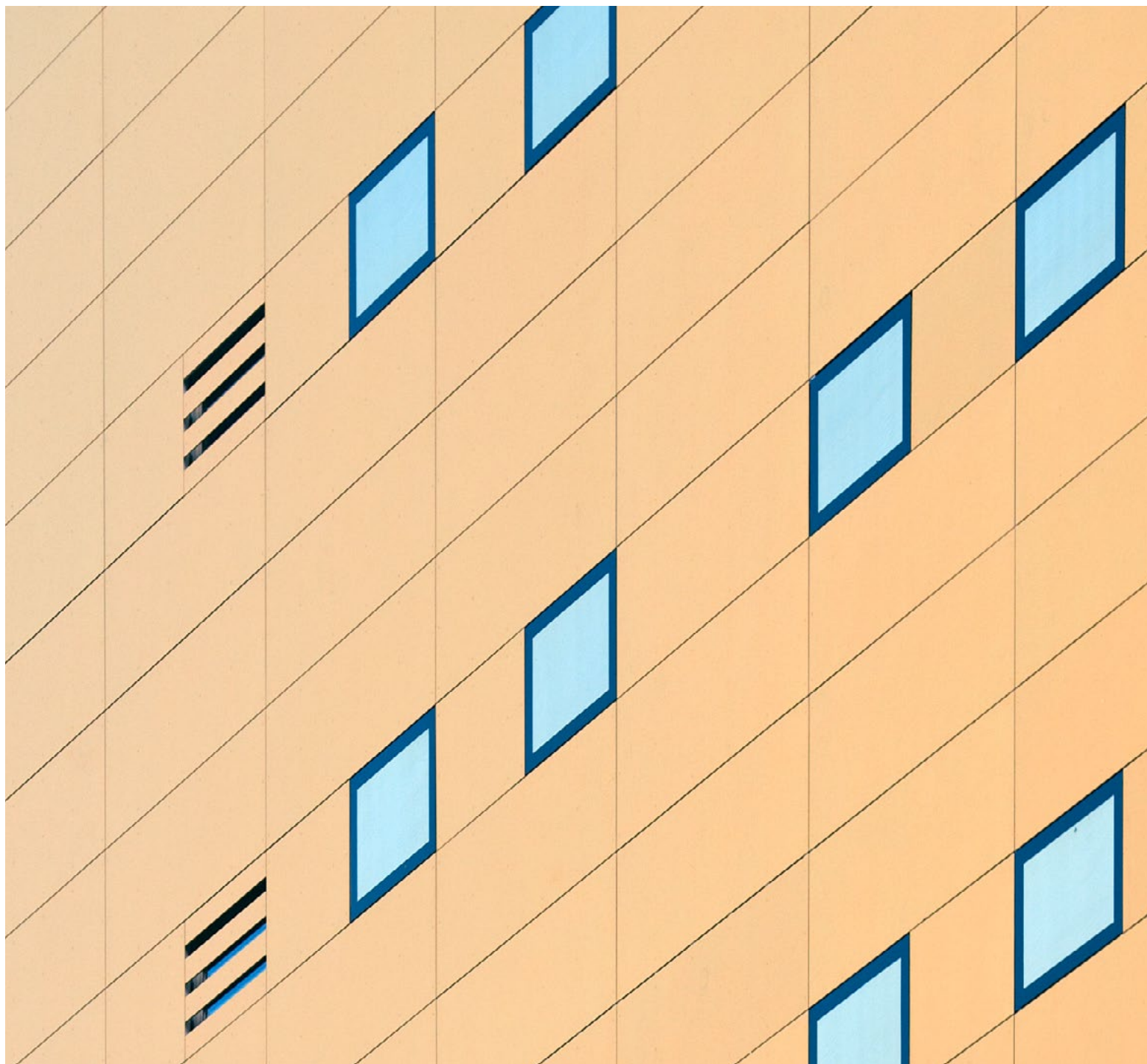
## PHOTO

Jürg Zimmermann, Zurich

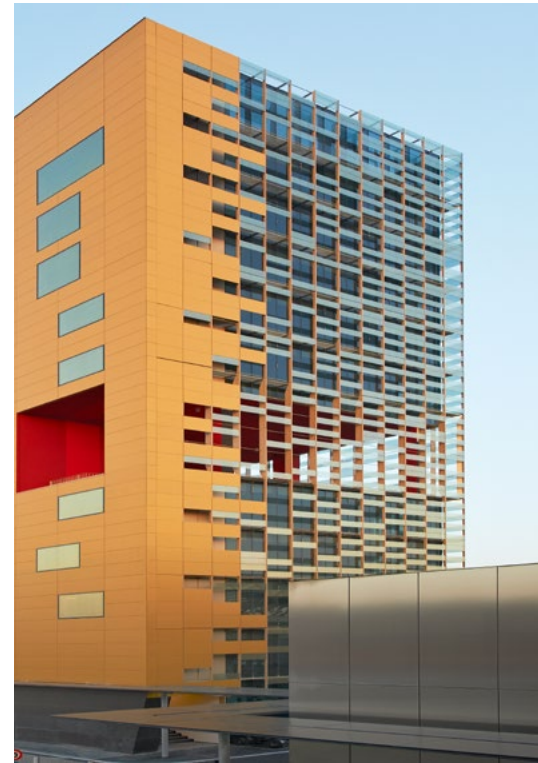
## CATEGORY

Office Building

[www.swisspearl.com](http://www.swisspearl.com)







## HORIZONTAL TOWER

Designed by Alfonso Femia and Gianluca Peluffo of the 5+1AA practice, in collaboration with French architect Jean-Baptiste Pietri, this administration building for the Milan Trade Fair in Rho consolidates its executive offices which had previously been scattered over various premises. The 21,000 square meter facility is wedged between the east gate of Massimiliano Fuksas' imposing exhibition complex and the underground railway station exit, overlooking major infrastructural facilities, such as the Milan–Turin highway to the east. ■ Text: Swisspearl

